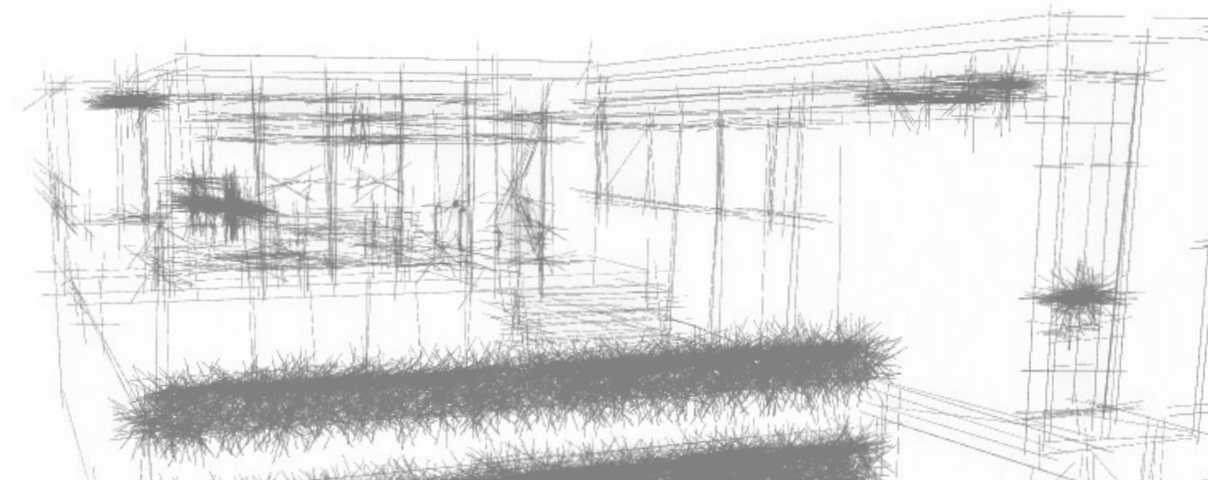


△△△



Triangles





Introduction

As part of a series of collaboration briefs with Architectural student Jack Dooley we decided to base this project around triangles. As with the other projects Jack has been working on the architectural spaces whilst I have been working on the interior prints.

We chose to work with triangles in order to give ourselves a challenge. It may only be a very simplistic shape, yet it can be difficult to work with in both of our fields. On the other hand it is still something that we can both work with, and used in both architecture and graphic design. Therefore we thought it would be interesting to see how we would both tackle it.

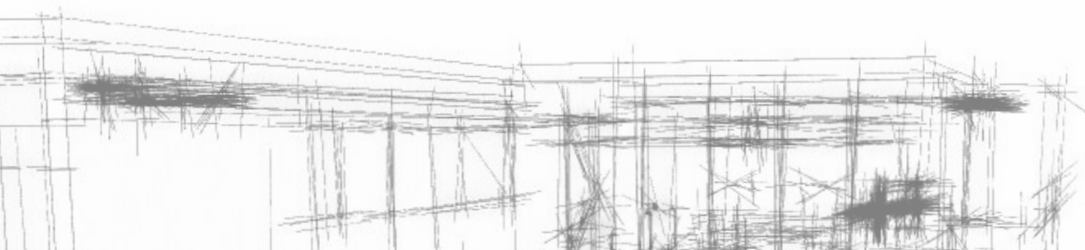
I started by taking in my own surroundings, looking at triangles around me and how they are used. This research proved to be very helpful as it pushed my sketches in the right direction. I also took great inspiration from Jack's designs and the overall feel of the spaces my work would be fitting into. Furthermore, as with our other projects, I have stuck to a basic colour scheme of blues combined with black and white. Again this is another challenge figuring out how to work with each colour, as they work differently with different techniques.





The architectural space for this project is different to the other two, in the way that the element of triangles is not in the actual building, it is displayed within the outside area with a repeated building around the edges.

I think this has helped me with my prints, as the buildings are now more of a blank canvas for me to work with. Furthermore It means the element of triangles is not too overpowering.



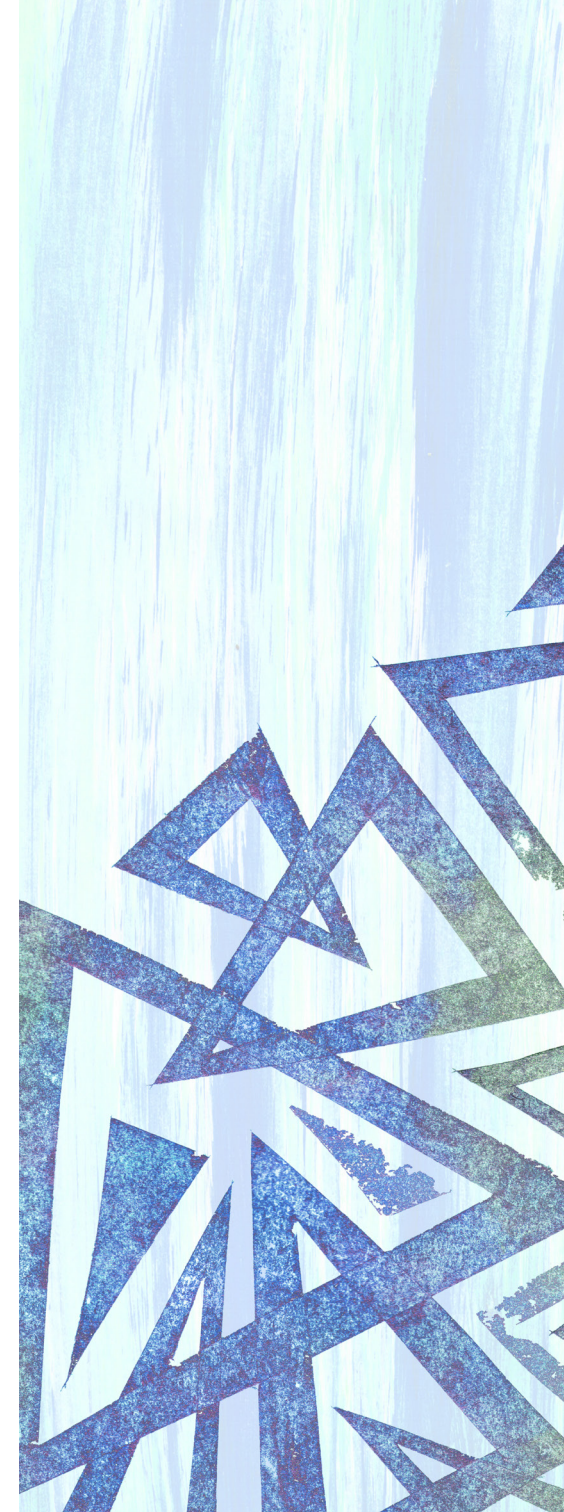
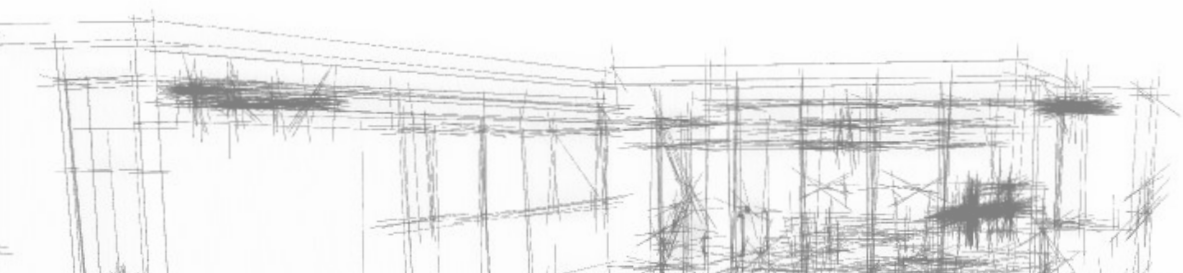


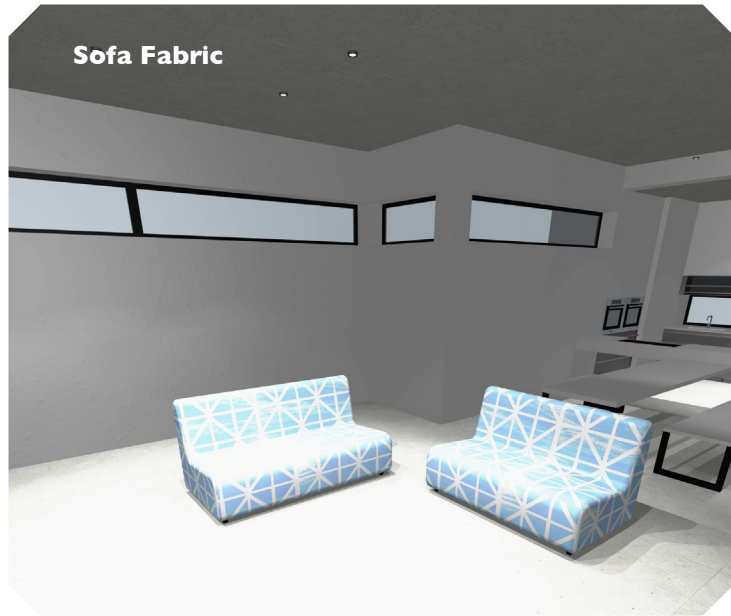
I love this wallpaper design I created for the kitchen, I think it is my favourite print from this whole project. I think that the combination of different textures and the use of space are quite strong. I thought it was important to create a statement piece, with this one strip of wallpaper in an unusual placement it really catches the eye.



‘By eliminating any solid divisions between the kitchen/dinning room/lounge I’ve created a space that feels more open whilst still providing clear visual divisions between the three spaces.’

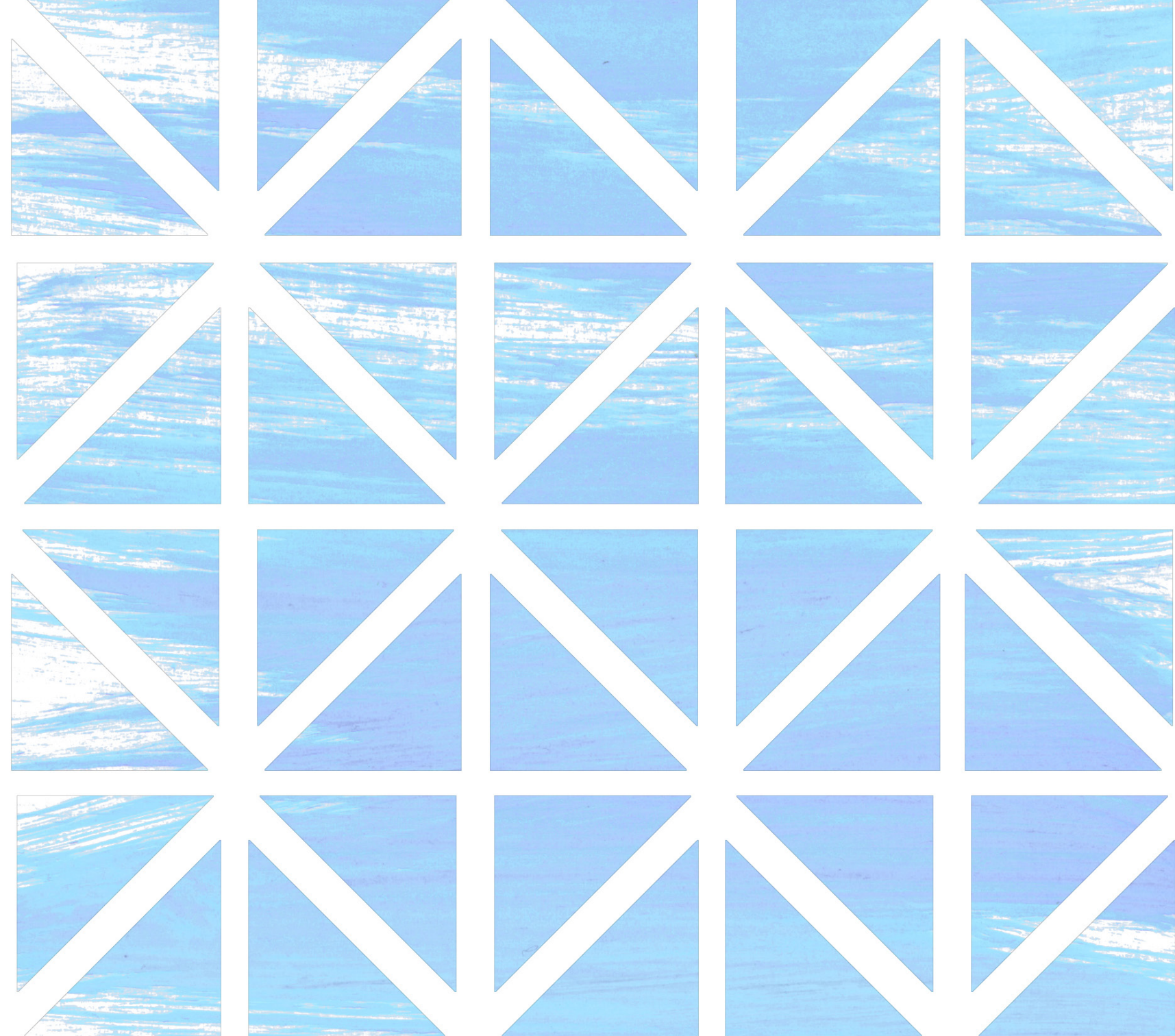
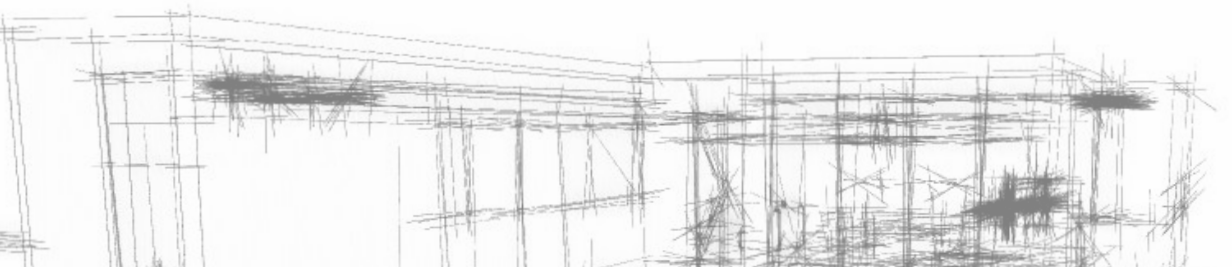
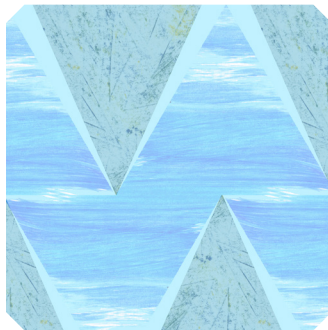
Jack Dooley





The living area within this building is a lot more condensed than the spaces in Jack's other designs. Therefore I decided to keep the majority of my prints quite a light shade in order to create a more open feel.

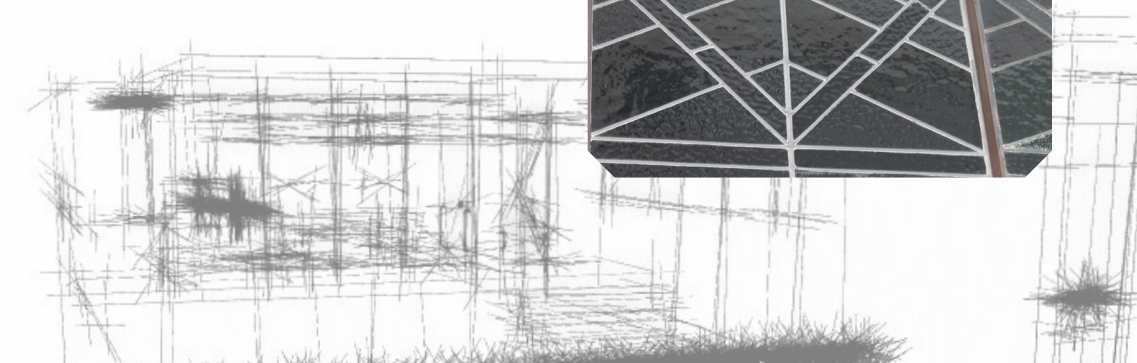
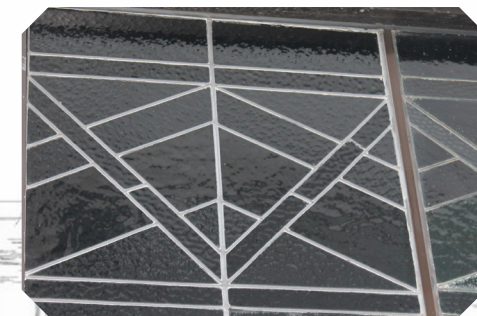
As with our other projects I knew that the sofa fabric had to be simplistic, and not have to wide a range of colours. I think this print works quite nicely, in that it has a nice texture and a level of originality, whilst still not being too in your face.

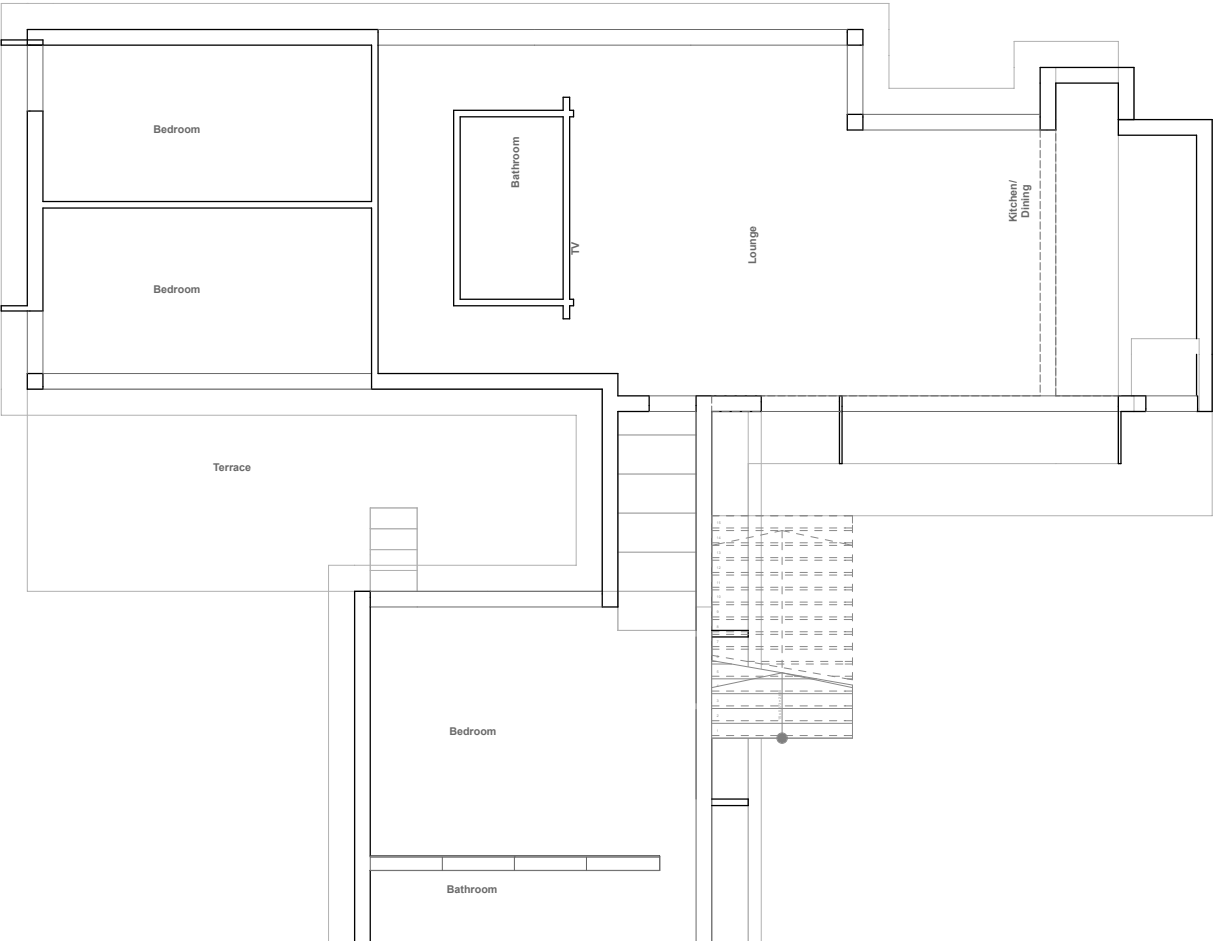
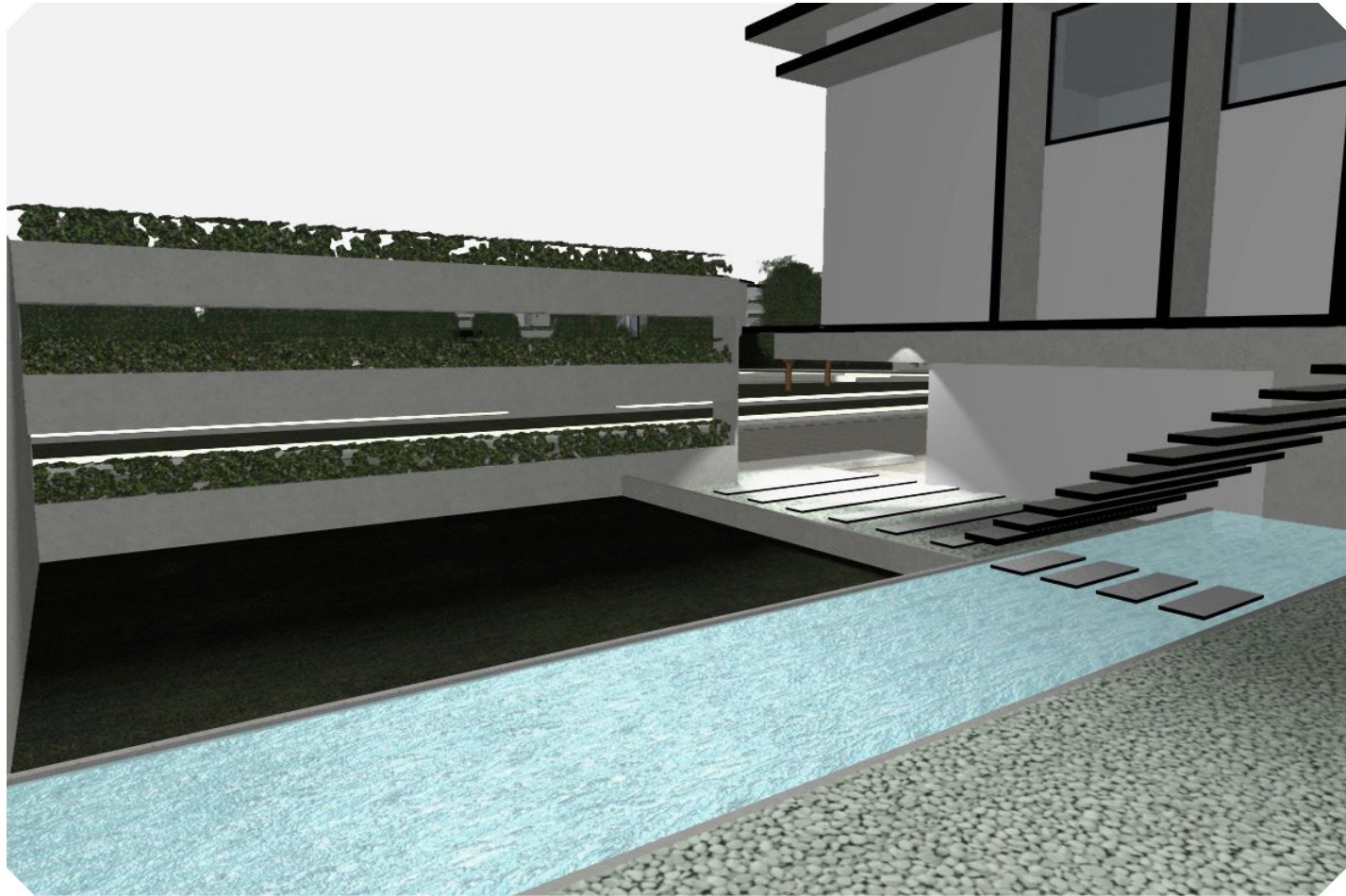




Triangles are the perfect shape to be used for repetitive patterns as well as on an individual level. This is mainly due to the fact that they tessellate, however there is a wide variety of different ways in which you can use them. I tried to use as many different ways as possible throughout my designs as I think variety is the key to this project.

I love this print (right), due to the range of textures, tones and patterns. I had hoped to use it as a full wall piece for the living area however it didn't work due to the scale of the space- it was just too overpowering.





The Exterior

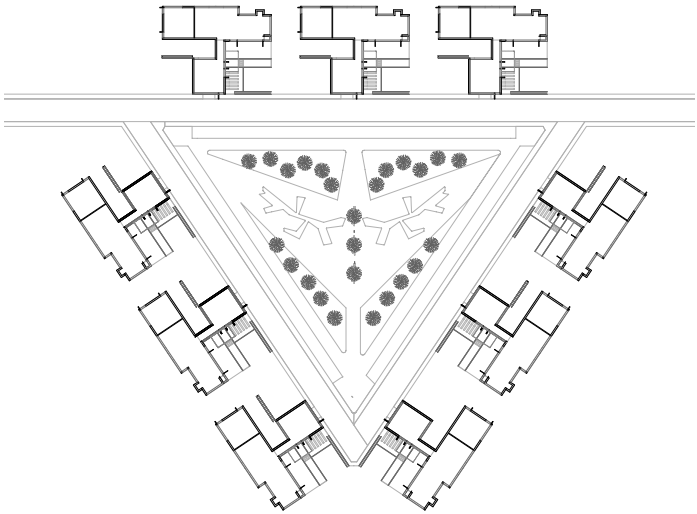
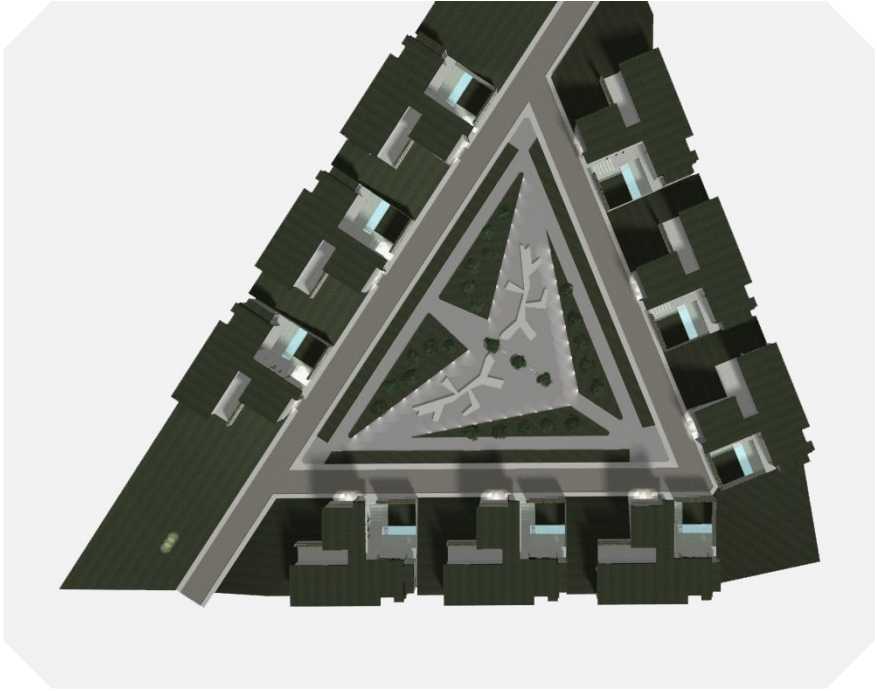


‘For me as a designer, ‘triangles’ has been the most difficult project so far. For this brief I chose to exclude the theme of triangles from the buildings themselves and instead incorporate it into the site layout, by doing so it allowed me to create an estate with a communal garden as the centre point’

Jack Dooley



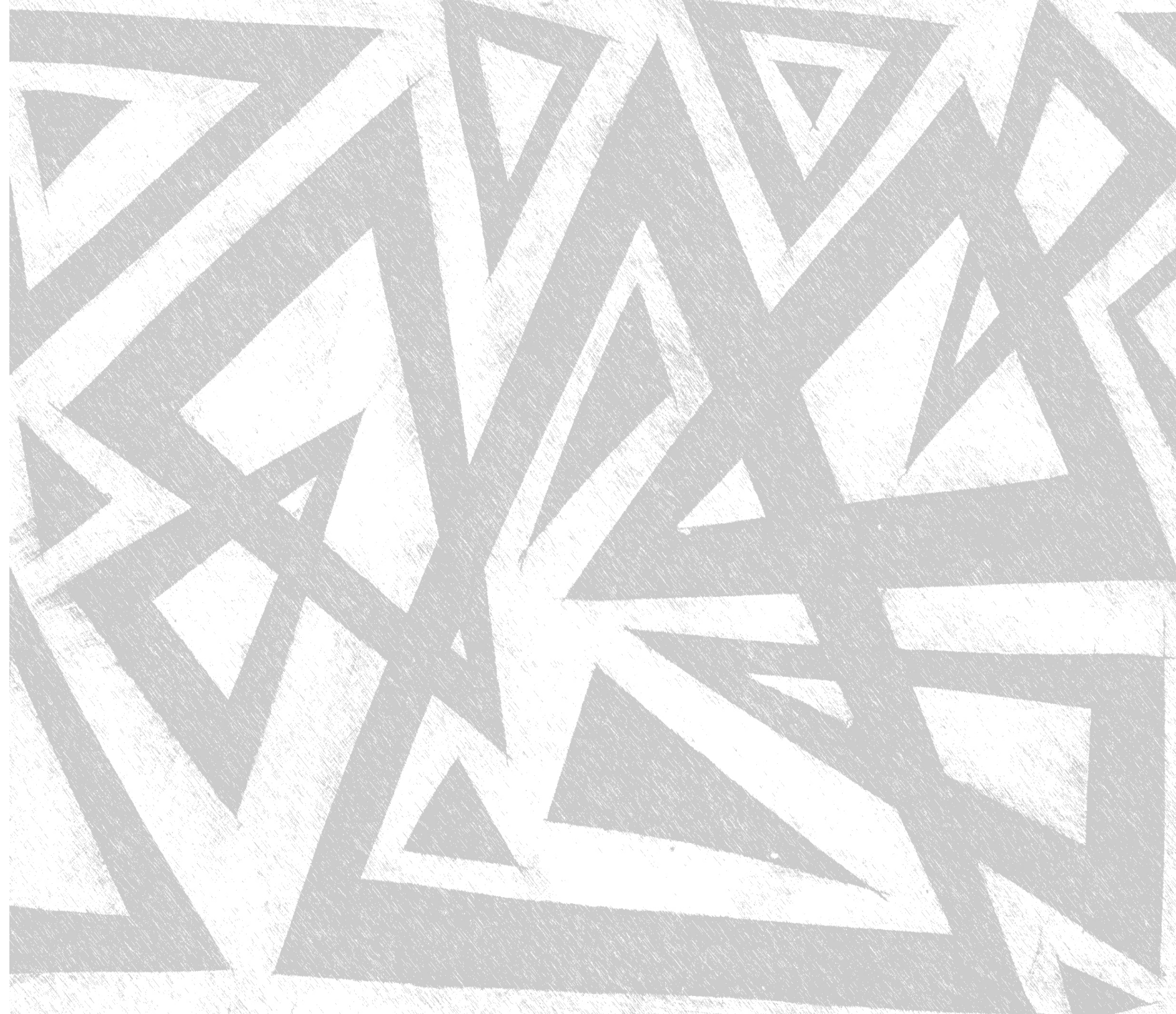
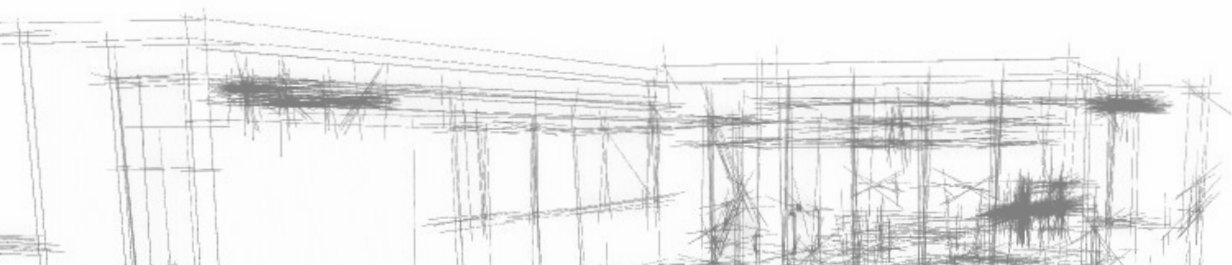
I experimented with the above design for a bed cover, taking inspiration from Jack's site layout (with it's interesting take on the triangle element). However even though this is a great part of the design I wasn't entirely happy with my finished print as I think it looks too busy for the bedroom.



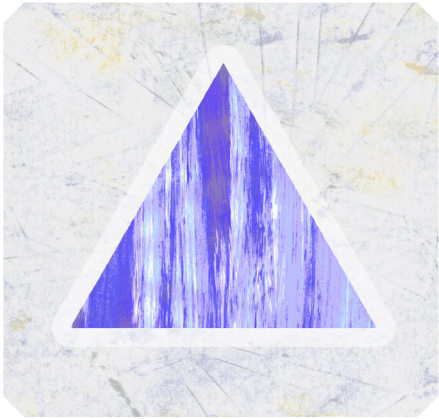
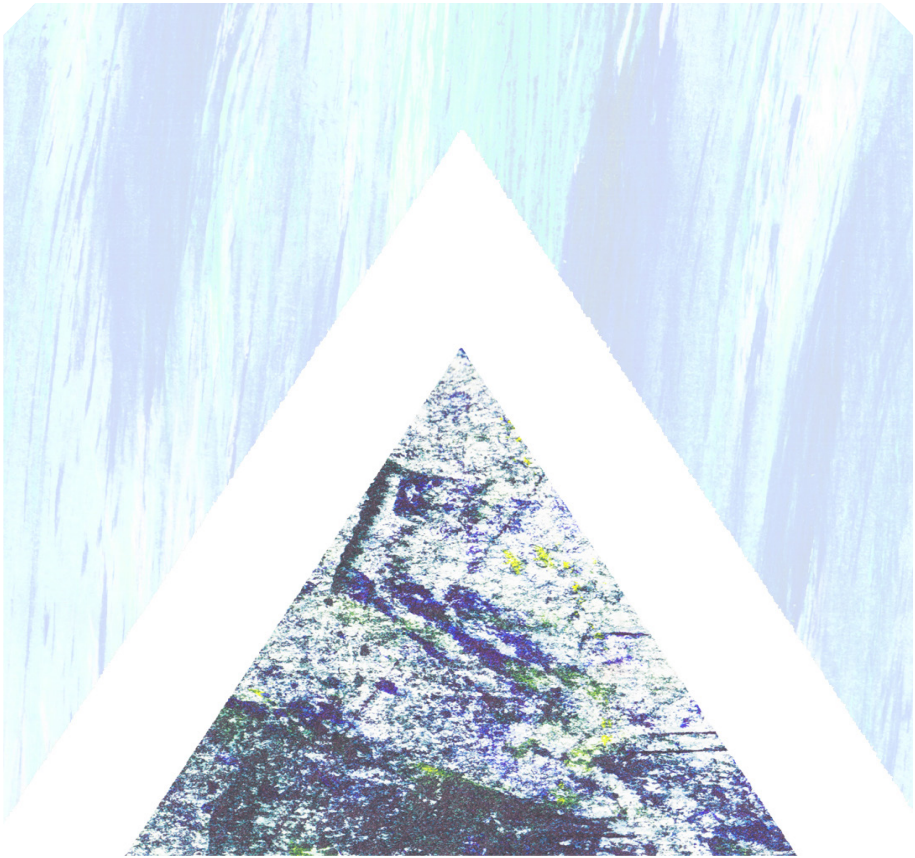
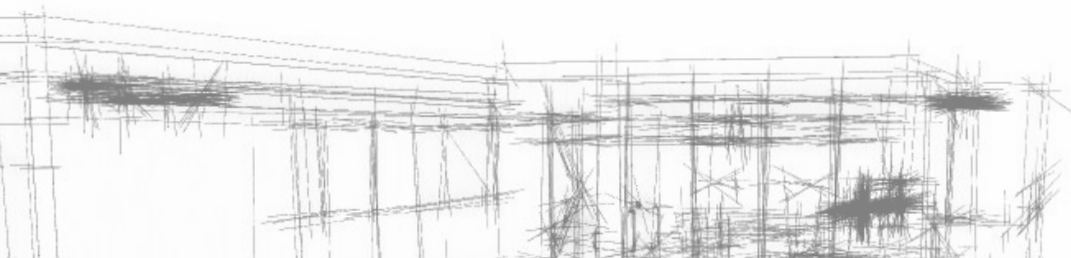


I chose to make my print for the bedroom black and white. This is the only design throughout the whole project that I have done this for as I feel the shade of blue I have been using is already quite calm and relaxed therefore it wasn't needed anywhere else.

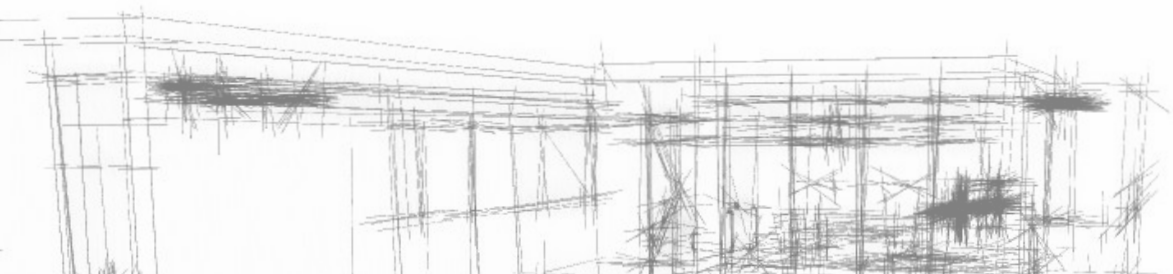
However, I think it is important to have a divide between the social spaces and the private spaces, therefore I went with this colour combination. I think this works well, and has a more tranquil feel than the rest of the rooms.



As this is such a compact building the bathroom is a very small space, therefore I found it difficult to incorporate my designs. I knew I wanted some kind of tile design, so I made a variety of different prints that could be used on tiles. I ended up using the tiles as one off statement pieces behind the sink and below the mirror, which I think works better than a full wall as it is something to focus the eye on.







Conclusion

I have found this project the most difficult out of this series of collaboration briefs with Jack Dooley. At the beginning I knew it would be a challenge, but I didn't realise quite how difficult it would be. I think even though triangles are a very simple shape they tend to be in a lot of logos and prints. This makes it difficult to be original, as there is a limit to the ways in which you can actually use them.

I also used a slightly different approach to my prints, I decided that only using paint brush strokes wasn't enough. Therefore I incorporated some more textural etching ink prints. I think this was a turning point in my designs, as it brought forward that level of originality I was looking for.

I know that Jack also found this project difficult, yet I really like the simplicity of his design, with the triangles embedded within the overall site shape. Even though this brief has been difficult I am happy with the overall outcome, I think that it has produced some really interesting and unique designs.



